



Board of Directors Officer Slate 2024

ROLE with LINK TO DESCRIPTION:	NOMINEE with LINK TO BIOGRAPHY:
<u>President</u>	<u>Taylor Ingram</u>
<u>President-Elect</u>	<u>Tami Foley</u>
<u>Past-President</u>	<u>Beth Hauck</u>
<u>Treasurer</u>	<u>Sam Lewis</u>
<u>Secretary</u>	<u>Nicole Butler</u>
<u>Co-Director of Membership</u>	<u>Beth Phillips</u>
<u>Co-Director of Membership</u>	<u>Katie Rife</u>
<u>Director of Certification</u>	<u>Kerry Keller</u>
<u>Director of College Relations</u>	<u>Derek Story</u>
<u>Director of Communications</u>	<u>Erin DeKnecht</u>
<u>Director of Diversity</u>	<u>Beth Hauck</u>
<u>Director of Government Affairs</u>	<u>Andee Radliff</u>
<u>Director of Programming</u>	<u>Vikki Falls</u>
<u>Director of SHRM Foundation</u>	<u>Alina Sanders</u>
<u>Director of Social Media</u>	<u>Kimmy Schoenbein</u>
<u>Director of Technology</u>	<u>Brandy O'Grady</u>
<u>Director of Workforce Readiness</u>	<u>David Lewis</u>
<u>Board Member-at-Large</u>	<u>Jolene Aldus</u>

Board of Director Officer Nominee Biographies:

Taylor Ingram: President



Taylor is currently an HR Business Partner at COUNTRY Financial and Illinois Farm Bureau. Taylor has worked at COUNTRY and IFB for over 10 years in a variety of HR functions including Talent Development, Employee Relations, Talent Acquisition (including College Recruiting), and HR Project Management. Taylor earned a Bachelor's degree in Communication with a Business minor in 2013 from the University of Illinois at Urbana-Champaign. She obtained her SHRM Certified Professional (SHRM-CP) certification in 2018. Taylor began involvement with BNHRC while still in school as an Employment intern at COUNTRY Financial and has been a BNHRC member since 2014. She joined the BNHRC Board of Directors in 2016 and previously serve in Communications, Marketing, Membership, Social Media, and Technology positions.

Tami Foley: President-Elect



Tami is the Executive Director of Mid Central Community Action, Inc. She has over 18 years of experience in Human Resources and Organizational Compliance. Leaving corporate America to join the non-profit sector in 2015, she has since earned her SHRM-CP (Society of Human Resources Management Certified Professional) and CNED (Certified Non-Profit Executive Director). She has worked with all departments at MCCA to ensure compliance with all grant regulations. Tami encourages and assists leadership and staff towards their professional development goals. She is on the WIOA board, Emergency Food & Shelter Program Board, Illinois Community Action Development Corporation board, The ISU Social Workers Advisory Board, is a member of Healthy Eating Active Lifestyles, the Invest Health team, and is a member of MCCA's Board Executive Committee. In her free time, she is at the baseball or football fields cheering on her son and grandson.

Beth Hauck: Past-President, Director of Diversity



Beth has been a professional with an expertise in HR for eight years. Beth is currently an Analyst in Continuing Education Programming at Heartland Community College. This position utilizes many Human Resource skills, including recruitment, retention, communication, and teamwork through collaborating with a team and instructors on course offerings. Beth also uses her Human Resource skills to consult at her church on anything related to job descriptions, interviewing, and other HR related topics. She was previously in Human Resources at Lifelong Access (formerly Marcfirst) for four and a half years. Prior to that role, Beth was at Toys "R" Us for seven years and spent her last year and a half there as the HR Department Supervisor. Beth earned a bachelor's degree in University Studies: Psychology from ISU in 2009. She is active on several boards, both at work and in the community. She has been a member of SHRM and BNHRC since 2018 and has served on the board as Board Member At Large, Director of Programming, Director of SHRM Foundation, and President.

Sam Lewis: Treasurer



Sam and his wife Terri are the owners of Pridestaff, a staffing and recruiting agency located in Bloomington-Normal. He is also an HR consultant for small businesses. In his career Sam has been an HR manager, a factory manager, a GM, and the VP of Engineering with responsibility for eight manufacturing plants across the U.S. He has been in leadership and management roles for over 30 years. Sam is a Certified Staffing Professional (CSP) through the American Staffing Association. He is very active in the community. He serves on the board of directors for the Work Force Investment Act for the state of Illinois. He is a curriculum advisor for Heartland Community College. He is also a board member for Marcfirst. Sam began serving on the BNHRC Board in 2012 as a Membership Co-chair.

Nicole Butler: Secretary



Nicole Butler has 18 years' experience leading human resources operatives and is currently serving as Executive Employee Relations for the Illinois Soybean Association (ISA). Nicole leads and directs all routine functions of the human resources programs at ISA. During her time serving in human resources, she has worked in mental health, insurance, manufacturing and has specialized in HR department startups. Nicole relocated to Normal, Illinois in 2021 and joined BNHRC in early 2022. Nicole has her Professional Certification in Human Resources Management (SHRM-CP) and Strategic HR Business Partner Certification (SHRBP). Nicole is looking forward to getting more involved with helping others and serving the community.

Beth Phillips: Co-Director of Membership



Beth is a Personnel Specialist for Event Management, Dining, and Hospitality at Illinois State University, having started in that role in Spring of 2020. The main focus in her position is student hiring and recruitment for the department, but also assisting in various other areas regarding employment. Beth is an Illinois State University alum and received her master's degree in Management and Leadership from Purdue University in 2020. She earned her SHRM-CP in 2022. Beth is a lifelong resident of Bloomington-Normal and spent over 20 years in management and supervisory roles in the restaurant industry prior to coming to ISU. She is newer to BNHRC and looks forward to serving on the board and assisting to the growth of the group.

Katie Rife: Co-Director of Membership



Katie is an employee benefits consultant at Cottingham & Butler working with and supporting HR professionals daily on recruiting, compliance, cost containment & benefits strategy. She has degrees from ISU in Politics, Psychology & Business and has worked in the employee benefits field for nearly 8 years. In addition to BNHRC, she is also an active member of the Bloomington-Normal Sunrise Rotary club and the McLean County Chamber of Commerce and volunteers for many local non-profits. Katie also loves to play golf and travel.

Kerry Keller: Director of Certification



Kerry works at State Farm and is currently on a development assignment to support staffing and logistics to one of the largest departments within the company. Kerry began working at State Farm in 2012 with prior experience at Carle BroMenn Medical Center in Human Resources. Kerry is an Illinois State University alum, having received both her Master of Business Administration and Bachelor's degrees from ISU. She earned the Professional in Human Resources (PHR) certification in 2009 and the SHRM Certified Professional (SHRM-CP) certification in 2015. Kerry has been a member of BNHRC since 2008 and began serving on the BNHRC Board in 2012. She has held several roles on the Board, including Membership, Secretary, President-Elect, President, Past-President and Social Media.

Derek Story: Director of College Relations



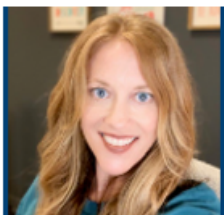
Derek is the Director of HR Systems, Training and Communication at Illinois State University where he is responsible for continuity of HR technology and learning and development for campus. Prior to joining Illinois State University Derek had experience at TEKSystems in the role of professional recruiter. He is a two-time Illinois State University alum, having received both his Master of Communication Studies and Bachelor's degrees from ISU, and teaches courses at both Illinois State University and Illinois Central College in public speaking and business information systems. Derek has been a member of BNHRC since 2013, a CUPA-HR (College and University Professionals Association) member since 2014 and a Midwest HEUG (Higher Education User Group – HR software and solutions) member since 2015. In his time at campus Derek has also served as a faculty/staff advisor to Redbird Red Cross, Tri-Delta sorority, ACACIA fraternity, Distinct Dance team, and as a past board member of Autism Society McLean County.

Erin DeKnecht: Director of Communications



Erin is a Talent Management Manager – LDA at State Farm, focusing on leading and working on the team responsible for performance enablement at an enterprise level. Prior to joining State Farm, Erin gained HR experiences at COUNTRY Financial and 1st Farm Credit Services, now Compeer Financial. Erin has a bachelor's degree in Agricultural and Consumer Economics from the University of Illinois and a master's degree in I/O Psychology from The Chicago School of Professional Psychology. She holds the PHR and SHRM-CP designations. She has been a BNHRC member since 2013 and served in numerous leadership roles on the board, including President.

Andee Radliff: Director of Government Affairs



Andee has been an active member of the Bloomington-Normal community for over 25 years, and passionately serves as the Assistant Director for Employer Engagement in Career Services at Illinois State University (ISU). Throughout her career, she has worked in the Human Resources field in various capacities including recruitment, training, employee relations, talent development, public relations, and marketing since 2001; and has previously held positions such as Talent Management Director, Benefits Officer, and Employment Consultant at ISU. Andee is a proud Redbird and has earned degrees in Psychology, Sociology, and Women's & Gender Studies all from Illinois State University. Andee has been a member of BNHRC since 2008 and has enthusiastically taken on several roles within the BNHRC Board including President, Membership Director, Director of Legislative/Governmental Affairs, Web Director, Student SHRM Chapter Liaison, and Secretary.

Vikki Falls: Director of Programming

Vikki has been part of the Bloomington-Normal community for over 30 years and currently holds the role of VP of Human Resources at The Baby Fold. Prior to joining The Baby Fold, Vikki spent 13 years as the Managing Director for a local medical services company. In this role, she demonstrated leadership in recruiting, hiring, employee relations, payroll, and benefits, while providing direct oversight for the organizational and financial direct of multiple subsidiaries. Vikki's background also includes time at State Farm in Underwriting, Agency, and Training/Development. She earned a Master's in Organizational Leadership from Lincoln College in 2021 after a 30-year school break from earning her Bachelor's degree in Speech Communication from the University of Illinois in 1990.

Alina Sanders: Director of SHRM Foundation



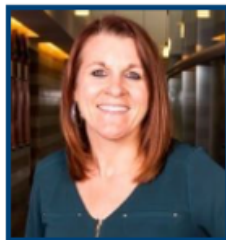
Alina is currently the Vice President of Operations and Compliance at YWCA McLean County. Originally from Romania, Alina has spent her career working within the media, insurance, and healthcare industries, providing expertise in design, operations, communications, marketing, and leading staff and volunteers. A graduate of Transilvania University and Purdue University Global, with degrees in Philology and Business Administration with focus on Management, Alina is passionate about supporting others through mentorship and educational opportunities. She is a 2020 graduate of the Pekin Area Chamber Leadership Academy, a FEMA certified business continuity practitioner, as well as a SCORE certified business mentor. She has recently joined BNHRC and looks forward to contributing to the growth of the group.

Kimmy Schoenbein: Director of Social Media



Kimmy currently works at CEFCU as a Business Development Account Executive, where she has worked for 20 years, starting as a teller and working her way up to her current position. Her primary responsibility is to help manage over 500 Partner Companies in McLean, Woodford, Tazewell, and Peoria counties. McLean county is her primary focus. She works with HR professionals daily to administer CEFCU Work, a financial wellness benefit, to their employees. Kimmy also serves as liaison for CEFCU by attending many events that support many local nonprofits. In addition, she volunteers for organizations like Boys and Girls Club of Bloomington-Normal, Marcfirst, St. Jude, and Easterseals of Central Illinois, as well as an Ambassador for the McLean County Chamber of Commerce. In 2021, she earned the Andy Butler Ambassador of the Year award for the McLean County Chamber. Kimmy resides in Deer Creek, where she was born and raised. She and her husband have two daughters Paris and Pia. Her passion is giving back to the communities she works and lives in. Her motto is "take care of your community, and your community will take care of you!"

Brandy O'Grady: Director of Technology



Brandy is currently a Human Resources Analyst at Heartland Community College where she specializes in benefits administration. She graduated from Illinois Wesleyan University in 2006 with a degree in Business Administration and Hispanic Studies. She received her Master's in Business Administration from Illinois State University in 2021. She previously worked at Illinois State University in Human Resources and Campus Recreation and served as Human Resources Administrator for an employee-owned landscaping company in Idaho. She has been a BNHRC member since 2018 and a board member since 2020, serving as Secretary, President, Past-President and SHRM Foundation.

David Lewis: Director of Workforce Readiness



David is currently the Career Center Coordinator for YouthBuild McLean County. Prior to this position David ran Lewis Consulting Group, Inc an educational consulting organization. As a speaker/trainer he has spoken to numerous association, corporate, and not-for-profit audiences across the country. Locally he was an adjunct faculty member at Heartland Community college for 16 yrs teaching Political Science. David is certified by Purdue University and the University of Oklahoma in diversity facilitation and is a certified trainer for Steven Covey's 7 Habits of Highly Successful People. He is also certified in Emotional Intelligence facilitation through Georgetown University. He is a Past President of the Indiana Chapter of the National Speakers Association (NSA).

Jolene Aldus: Board Member-at-Large



Jolene serves as the Executive Director of Habitat for Humanity of McLean county. With the help of her team, this role oversees all HR functions of the organization, affiliate office, and the ReStore. Jolene has over 20 years of leadership experience specializing in employee relations, development, and culture creation. Early in her career she worked as a HR Generalist for several corporate entities before moving to operation and general management roles in the same sector. The non-profit sector allows Jolene to utilize her experience and skills in a multi-faceted capacity for the families served, volunteers, board of directors, and staff. Jolene is very active in the community serving for various committees and initiatives. She is the administrative chairperson for Bloomington-Normal Sunrise Rotary, A McLean County Chamber of Commerce Ambassador, A Becoming BN Committee Member, and a Leadership McLean County Alum. Jolene resides in Bloomington with her fiancé and four children.